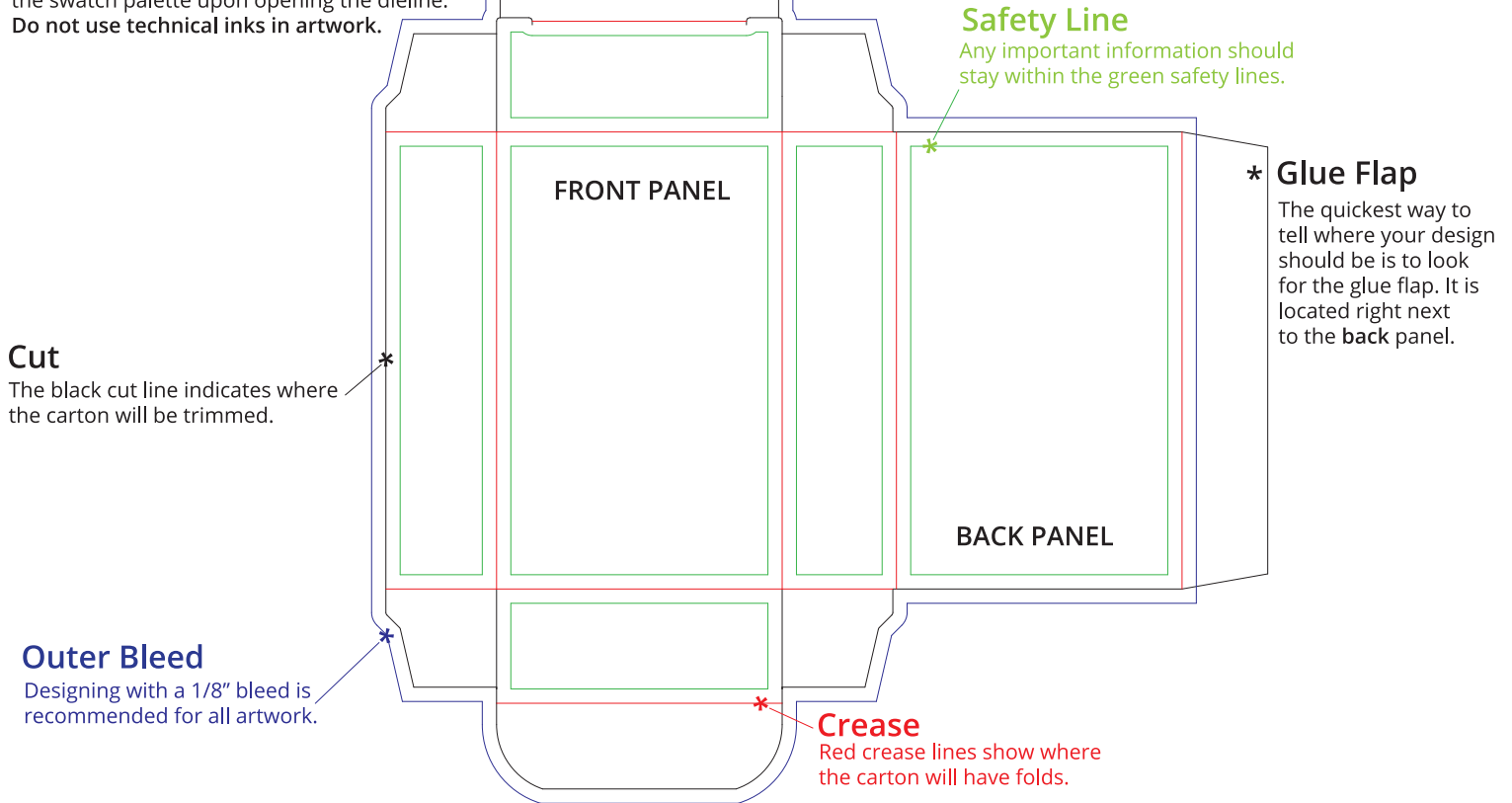


Anatomy of a dieline

Technical Inks

The colors that make up the dieline are called technical inks. They are encoded within our proprietary software to be removed during the production workflow. These inks will load in the swatch palette upon opening the dieline. Do not use technical inks in artwork.



Preparing a Print Ready File



Outline Fonts

Ensure that there are no issues or errors with live font by outlining text. Minimum thickness for fonts and graphics should be no less than 0.25 pt.



Color Mode

Document must be set up as CMYK for print. Pantone spot colors should be called out as noted in color book for conversion.



Embed all Links

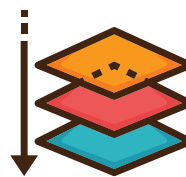
Artwork must be embedded into art file to prevent broken links.



Resolution

Images should be at least 300 ppi at 100% scale for high quality printing.

Submitting Ready Artwork



File Type

Add your artwork to a separate layer than the dieline and submit as a layered vector PDF. Remove any unused layers.



Submission

Email completed artwork to customerservice@foldedcolor.com. Include your order number in the subject line. Files exceeding 10mb can be sent via <https://wettransfer.com/>.



Final Approval

You will be provided a 3d proof for final approval of your artwork prior to production. Proofs are usually generated within 1-2 business days. Please follow up with customerservice@foldedcolor.com if you have not received your proof within that time.